

Lectionary Life Links

Easter 3 Year C

Alleluia, the Lord is Risen!



Find the page numbers in your home Bible for this

S u n

week's passages:
 Acts 9:1-20 _____
 Psalm 30 _____
 Revelation 5:11-14 _____
 John21:1-19 _____

Mon. Where do you find conversion experiences in these passages?

Tue. Read the Acts passage: When in your life have you been blind and Christ has given you vision?

Wed. Share your life conversion experience with someone else. (Evangelism ala Peter, Paul and Ananias)

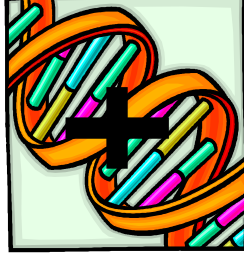
Thurs. Conversion requires transformation. Plant a "seed" in the world and watch it transform during this Eastertide. (possible seeds: faith, trees, love, flowers, justice, garden...)

Fri. **Create a tune** for the lyrics in verses 12 and 13 of the Revelations passage and join the myriads and thousands in singing the song to God.

Sat. Sneak Preview: Tomorrow's Readings
 Acts 9:36-43
 Psalm 23
 Revelation 7:9-17
 John 10:22-30

What is the common thread in these readings?

Sun. Pick up your new Life Links



Lectionary Life Links

Easter 3 Year C

Alleluia, the Lord is Risen!



Find the page numbers in your home Bible for this

S u n

week's passages:
 Acts 9:1-20 _____
 Psalm 30 _____
 Revelation 5:11-14 _____
 John21:1-19 _____

Mon. Where do you find conversion experiences in these passages?

Tue. Read the Acts passage: When in your life have you been blind and Christ has given you vision?

Wed. Share your life conversion experience with someone else. (Evangelism ala Peter, Paul and Ananias)

Thurs. Conversion requires transformation. Plant a "seed" in the world and watch it transform during this Eastertide. (possible seeds: faith, trees, love, flowers, justice, garden...)

Fri. **Create a tune** for the lyrics in verses 12 and 13 of the Revelations passage and join the myriads and thousands in singing the song to God.

Sat. Sneak Preview: Tomorrow's Readings
 Acts 9:36-43
 Psalm 23
 Revelation 7:9-17
 John 10:22-30

What is the common thread in these readings?

Sun. Pick up your new Life Links